

PHARMACEUTICAL INDUSTRY

PRODUCTS AND FOCUSES





BRETTEN-GÖLSHAUSEN LOCATION

From here we operate domestically and internationally – with expertise and in the 50th year of our success story.



Do you need a single-wall tank or a tank with heating-jacket? We offer various vessels pressurized or not, with magnetic bottom mixer, pharmaceuticalgrade finish and much more.

We know about the importance of drainability and give you design considerations, link to a video:

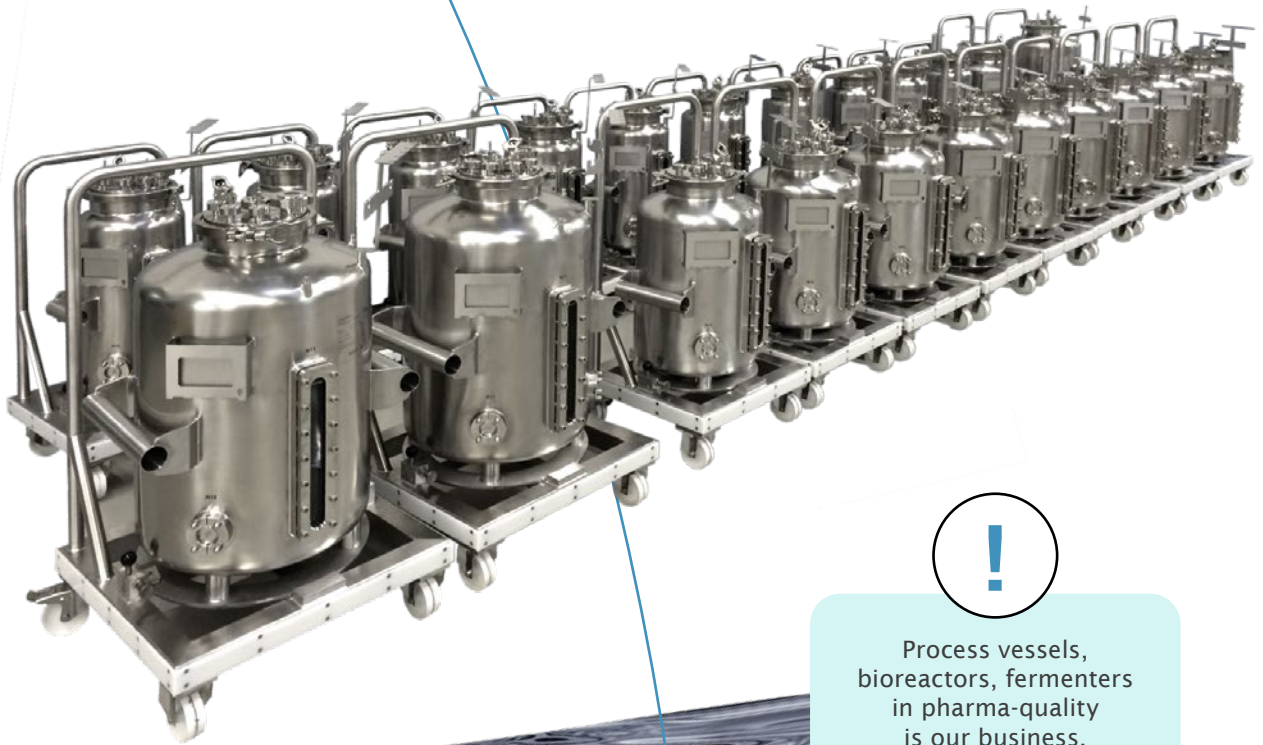


Design of the tanks created in close cooperation with the customer.

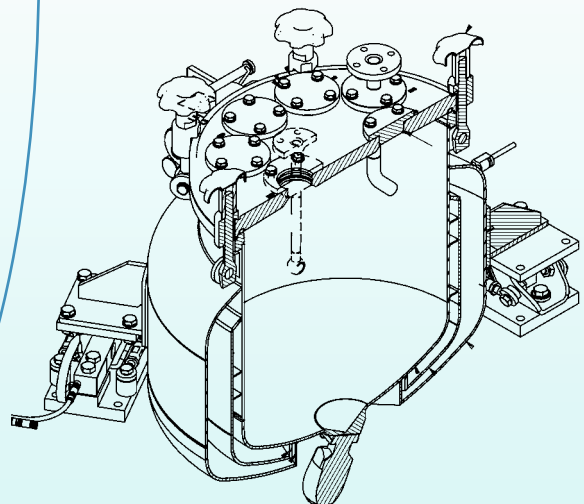
Completely drainable in accordance with ASME BPE latest edition.



VESSELS



Process vessels, bioreactors, fermenters in pharma-quality is our business.



SMALL VESSELS



Dosing and filling vessels for Health-care and Biopharmaceutical Industry

Volume: 1.5 to 1,500 l
Diameter: Up to 1,200 mm
Weight: Up to 2,000 kg



PLANT CONSTRUCTION



Design and Construction of plants for pharmaceutical industry according to GMP guidelines.



FILTRALINE® CARTRIDGE FILTER HOUSINGS

Hygienic design
according to ASME BPE

High surface quality

Modular and adaptable to different
filter cartridge lengths (5", 10", 20",
30" or 40") up to 80 cartridges

Sloping surfaces to ensure complete
drainability of the liquid acc. ASME BPE

Special angled fittings bent to
88 or 92 degrees

Heatable

Sanitary body closures and couplings
similar to DIN11864

Liquid filtration and gas filtration

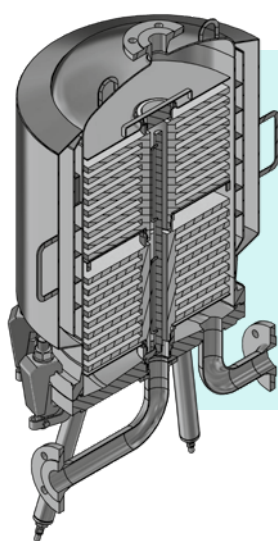
CIP-Cover (for Pharma)
For easy clean-in-place (CIP)
technology



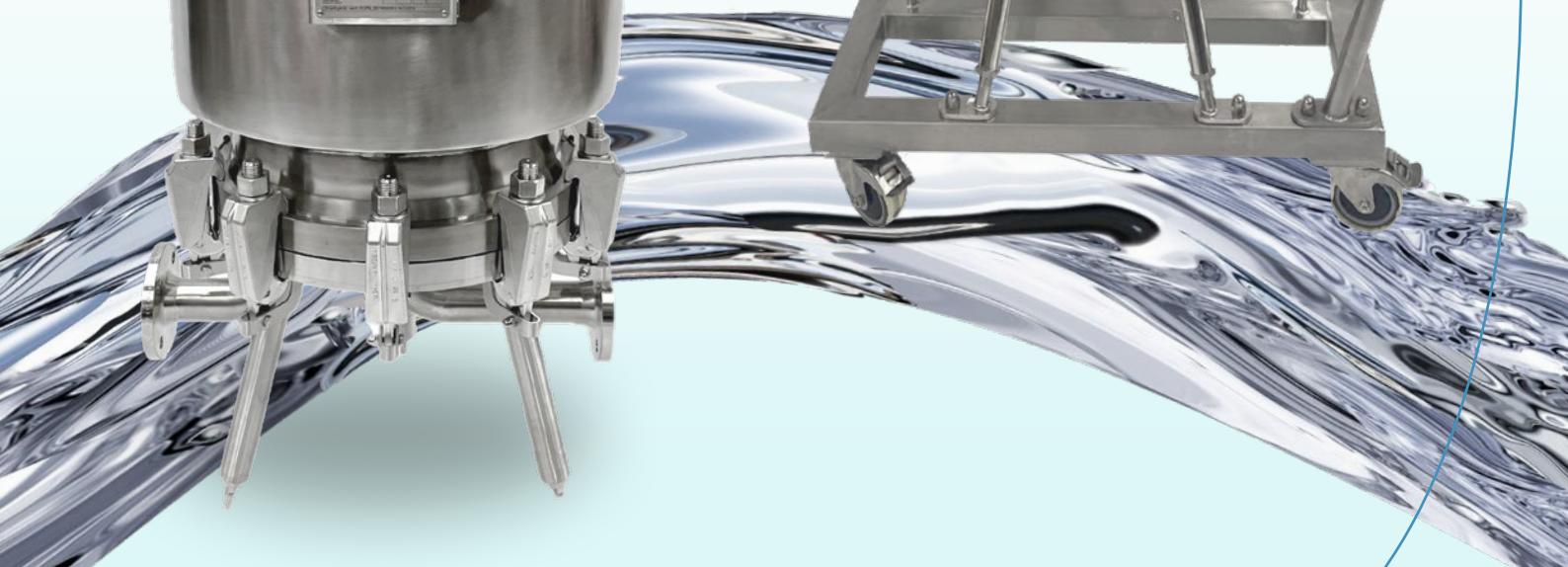
Read
more:



Enquiry form
on our website:



- Hygienic design
- Various widths and connection options
- Variations with additional connections
- Pneumatic clamping unit
- Various materials possible



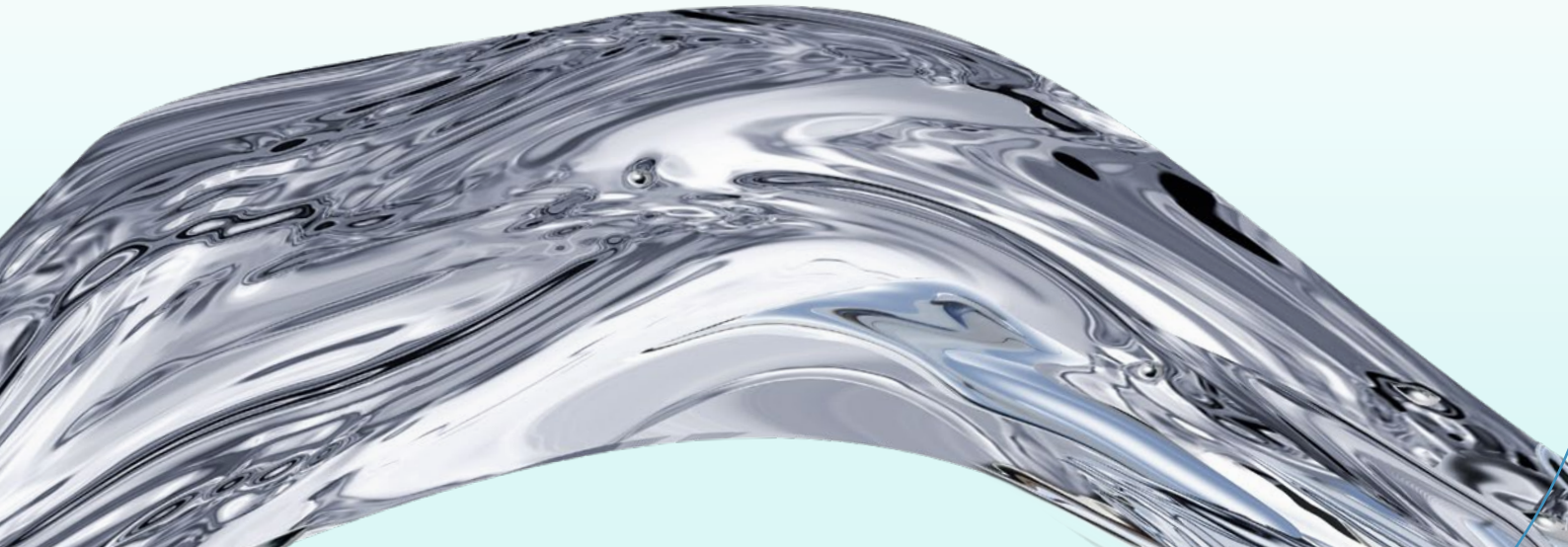
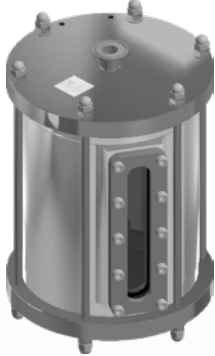
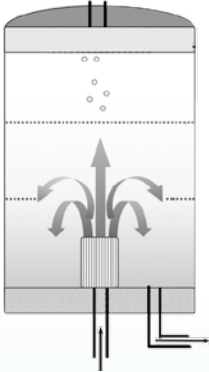
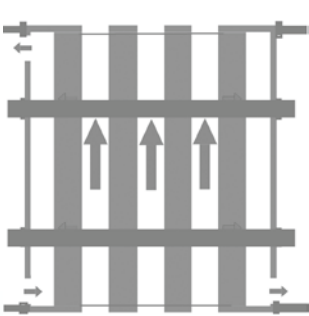
SPECIAL PRODUCTS



Tangential Flow Filtration (TFF),
Membrane Cassette Holder,
with various connections

Bubble Traps, removing air pockets
during process

CIP-lances (for Pharma)
with customised sprayballs

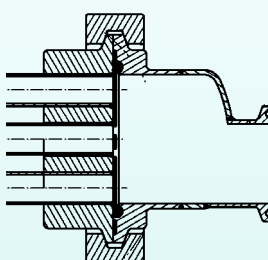
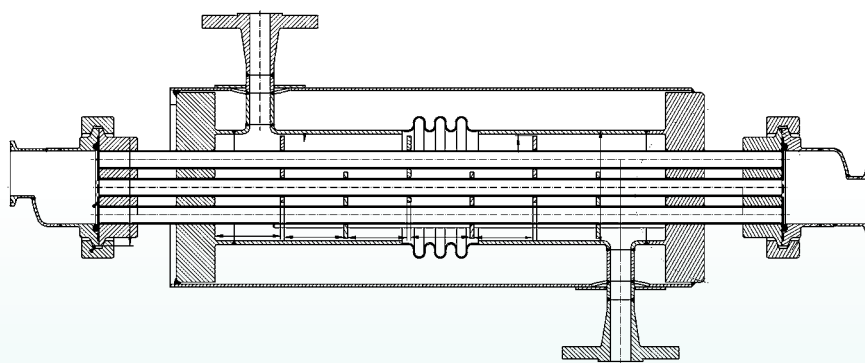


HEXALINE HEAT EXCHANGERS

Enquiry form
on our website:



Tailor-made product solutions for your individual heating or cooling tasks including own thermal engineering. Pharmaceutical heat exchangers in DTS design (double-tube-sheet). Primary and secondary compartments are completely isolated from each other by means of an additional head plate.



Surface: e-polished/
seamless inner tube
with inner surfaces up to
 $Ra \leq 0.38 \mu\text{m}$.

Special aseptic clamp
head with perforated
clamp-plate for complete
draining.

MEMBRALINE® MEMBRANE HOUSINGS

Enquiry form
on our website:



Modular system: the right housing for your application can be assembled from standard components without long development and design times.

Adaptation system: membrane replacement without replacing the membrane housing.

Extensive testing and documentation possible on request.

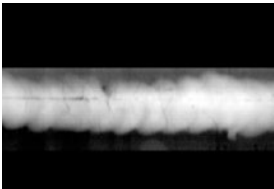
Accommodation of any standard membrane module of the same membrane diameter.



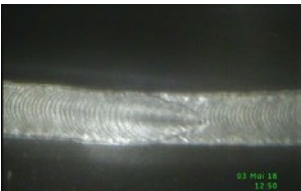
QUALITY ASSURANCE & DOCUMENTATION



Penetration test



Digital X-ray up to 600 mm diameter.



Endoscopy of weld seams



Riboflavin test

We carry out specific tests, such as X-rays, dye-penetrant inspections or pressure tests in-house, endoscopy of weld seams and riboflavin tests for quality assurance.

Our documentation is detailed and can include material certificates, surface measurements, calibration certificates and much more. On request, we can also document a drainability test in accordance with ASME BPE latest edition.

ACCEPTANCE DOCUMENTS & APPROVALS



PED 2014/68/EU Module A to H/H1 - European Pressure Equipment Directive



ASME - For export to the USA and more than 100 countries worldwide



CRN - Pressure devices for the Canadian market



KEA - Certification of machinery and equipment for the South Korean market



SELO licence - Approval procedure of the Chinese authority for pressure tanks



JIS - The Japanese Industrial Standards define the standards that are used in Japan

Quality management, certified according to DIN ISO 9001:2015

You can find detailed information at:
www.sus-bretten.de/en/approvals-certificates/





INEX solutions

Excellence in Premium Steel



INEX-solutions stands for bundled power and innovative technology „Made in Germany“. With over 300 employees, we are at your service!



 A company
in the GESCO-Gruppe

Sommer & Strassburger GmbH
Gewerbestraße 32
75015 Bretten – Gölshausen

Tel.: +49 (0) 72 52 / 93 95 – 0
E-Mail: info@sus-bretten.de
www.sus-bretten.de

